



1, Production introduction

Product introduction

Steel roller security shutters are an ideal choice for improving the security of business premises, and they offer several other advantages. For example, our steel roller shutters are made of galvanized steel, meaning they won't rust no matter how bad the weather conditions.

This makes them a durable and long-lasting security option for any business. But these are just two of the benefits you gain when investing in security shutters. When choosing the right design for your business, you'll find that they can provide more.

Steel Roller shutters are ideal for high-street shops. They deter vandals and criminals. Roller shutters protect store windows and reduce the necessity for constant window cleaning. They can safeguard your windows and door from casual vandalism by people out on the town in the evenings or at weekends.

The risk of burglary at any business is a genuine concern for any business owner. That is why we at Starking Shutters strive to offer a reliable shield for your property with our superior roller shutters. Our Steel roller shutters' steel exteriors are highly durable against cutting. The longer your shutter can keep them out, the more they consider giving up.

Product introduction

In terms of design options, steel roller shutter doors offer a wide array of choices to suit your personal taste and architectural preferences. Whether you prefer a modern, minimalist look or a more traditional aesthetic, these doors can be customized to enhance the overall appearance of your property. Furthermore, they are available in a variety of colors and finishes, allowing you to create a door that complements the existing design elements seamlessly.

Maintenance is key to ensuring the longevity of any product, steel roller shutter doors are designed with this in mind. With minimal maintenance requirements, these doors are built to withstand the test of time, making them a cost-effective investment in the long run. Additionally, their durable construction reduces the risk of wear and tear, ensuring that they remain in top condition for years to come.

Safety is a top priority for any property owner, and steel roller shutter doors are equipped with advanced safety features. With their anti-lift locks and automatic safety sensors, these doors provide an extra layer of protection against accidents and potential hazards. This makes them an ideal choice for families, businesses, and organizations that prioritize safety above all else.

When it comes to installation, the steel roller shutter doors are designed to be easy and hassle-free. With the assistance of professional technicians, these doors can be installed quickly and efficiently, allowing you to enjoy the benefits of enhanced security and convenience without delay. Moreover, they can be retrofitted to existing structures, eliminating the need for extensive renovations.

Product introduction

Steel roller shutter doors are of the most cost-effective solutions to secure your premises, our galvanized steel rolling shutters can be used for a wide variety of commercial, industrial or residential applications

Designed specifically for external use, these doors are widely used in commercial buildings, warehouses, garages, and even residential properties.

They can come in a range of colors and are heavy duty so they're very strong that keeping your assets safe & protected from theft.



2, Applications

Applications of Steel Roller Shutter Doors

1. Warehouses and Industrial Buildings

Steel roller shutter doors are widely used in warehouses and industrial buildings due to their robustness and security features. They provide easy access for loading and unloading goods, and their durability ensures long-term operation.

Applications of Steel Roller Shutter Doors

2. Commercial Spaces

Retail stores, shopping malls, and multiplexes benefit from the security and aesthetic appeal of galvanized steel roller shutter doors. These doors offer a professional nice appearance, enhancing the overall impression of the business premises.

Applications of Steel Roller Shutter Doors

3. Garages and Parking Lots

Steel roller shutter doors are also commonly used in garages and parking lots. Their compact design and easy operation make them an ideal choice for areas with limited space.

Applications of Steel Roller Shutter Doors

4. Residential Properties

Steel roller shutter doors are the most common choice for home users to enhance the security and energy efficiency of their residences. These doors provide an additional layer of protection against break-ins and contribute to a more comfortable living space.



3, Benefits

1. Cost-effective

One of the key advantages of low cost roller shutter doors is their low cost. Made from steel materials, Although nowadays roller shutter can be manufactured from a wide variety of materials. While The most common choice is galvanized steel, which is the lowest cost while provides a high level of security against forced entry.

Benefits of Steel Roller Shutter Doors

2. Security

Security is a top priority for any building owner or occupant, steel roller shutter doors provide an excellent solution. These doors are equipped with strong locking mechanisms, preventing unauthorized access and ensuring the safety of the premises. The robust steel slats and tracks offer enhanced resistance against forced entry, making them an excellent choice for commercial properties.

Benefits of Steel Roller Shutter Doors

3. Energy Efficiency

Steel roller shutter doors provide excellent insulation properties, helping to maintain a comfortable indoor environment while reducing energy costs. The insulated slats of these doors prevent heat loss during colder months and minimize heat gain during warmer months. By reducing the need for heating and cooling, these doors contribute to energy savings and a more sustainable building.

Benefits of Steel Roller Shutter Doors

4. Noise Reduction

Noise pollution can be a significant issue in commercial areas. Steel roller shutter doors feature insulating properties that help reduce outside noise, creating a quieter and more peaceful indoor environment. This is particularly beneficial for businesses located near busy roads or areas with high noise levels.

Benefits of steel Roller Shutter Doors

5. Nice Appearance

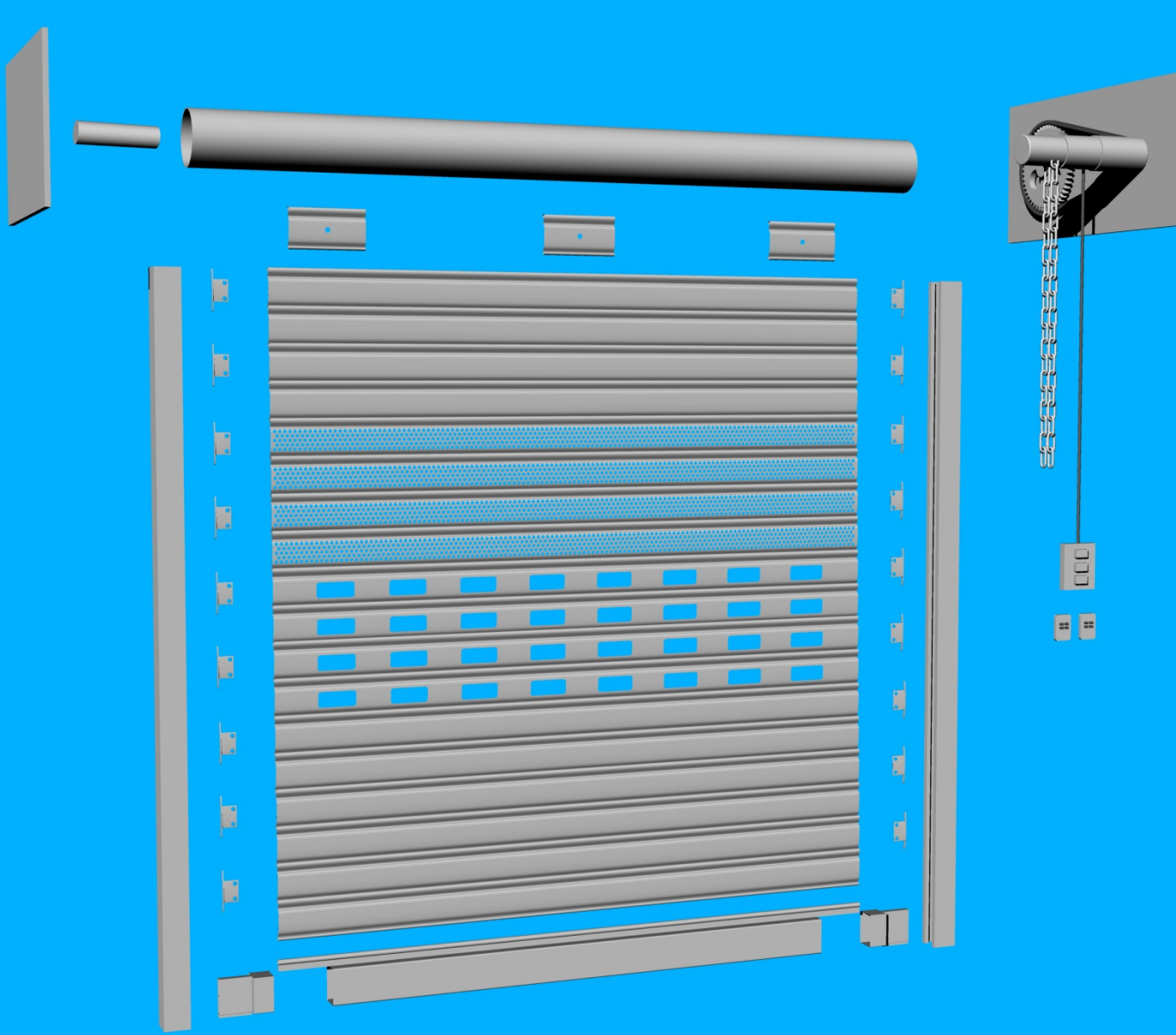
In addition to their functionality, steel roller shutter doors offer nice appeal. They are available in a variety of finishes and colors, allowing them to seamlessly blend with any architectural design. This versatility makes them a popular choice for both industrial and commercial properties.

Benefits of Steel Roller Shutter Doors

The background of the slide is a grayscale photograph of a workspace. It includes a calculator, a spiral-bound notebook, and a pen. A large, semi-transparent green circle is positioned on the left side of the image, partially covering the calculator and notebook. The text '4, Drawings' is written in white, bold, sans-serif font inside this green circle.

4, Drawings

Drawing of Steel roller shutter door



- 1,Steel bottom rail
- 2,Plastic insert
- 3,Steel slat
- 4,Steel end clip
- 5,Steel punched slat
- Steel guide rail
- 7,Steel micro-perforated slat
- 8,Shaft (roller drum)
- 9,Bearing
- 10,Left side plate
- 11,Right side plate
- 12,Roller shutter motor
- 13,Manual hoist chain
- 14,Switch button
- 15,Remote control



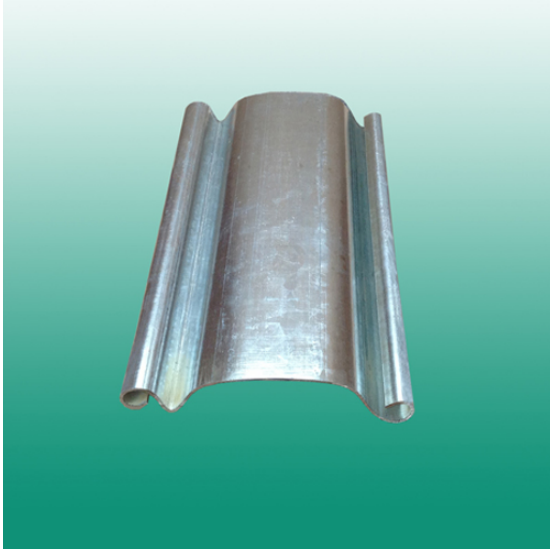
5, Technical specifications

Technical Data Sheet: Steel Roller Shutter Door

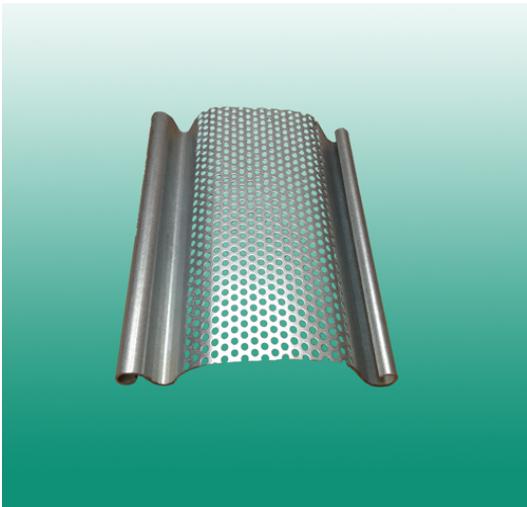
Construction Material:

- 1, Door Curtain: High-quality steel, with steel end caps/clips
- 2, Guide Rails: Galvanized steel
- 3, Bottom Bar: Galvanized steel with end cap

Slats options

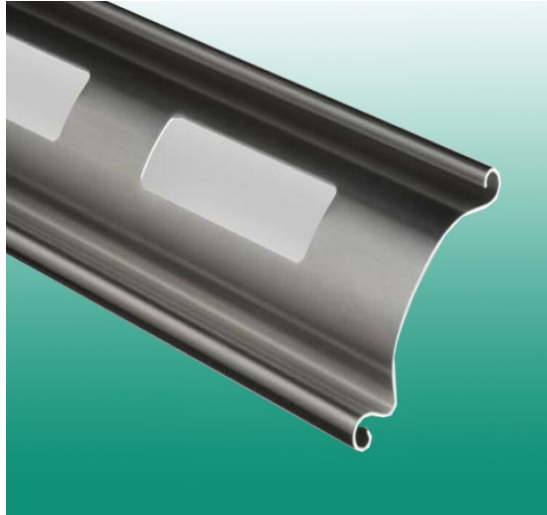


- ◆ Item number:SG82
- ◆ Material: Single skin steel
- ◆ Dimension: 82 mm pitch height, 0.8mm/1mm/1.2mm thickness
- ◆ Max Width*Height: 7000*7000mm
- ◆ Color: any RAL color
- ◆ Surface finishing: pre-painted, galvanized, powder coating

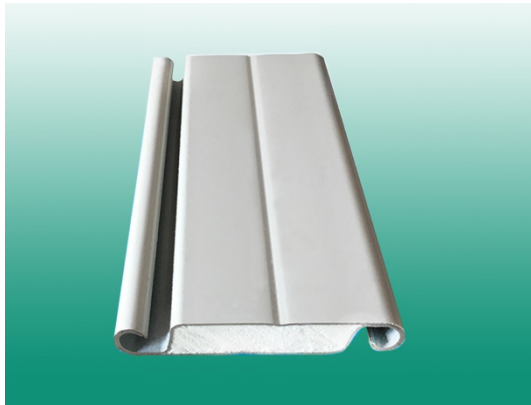


- ◆ Item number:SGP82
- ◆ Material: Single skin steel with small 3 mm diameter holes
- ◆ Dimension: 82 mm pitch height, 0.8mm/1mm/1.2mm thickness
- ◆ Max Width*Height: 6000*6000mm
- ◆ Color: any RAL color
- ◆ Surface finishing: pre-painted, galvanized, powder coating

Slats options

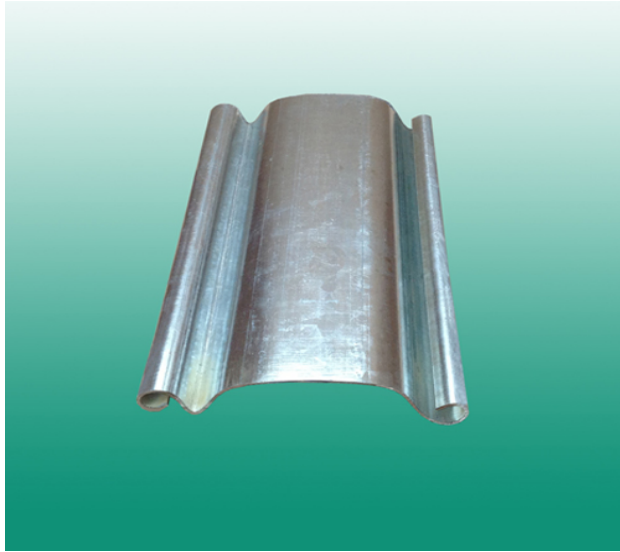


- ◆ Item number:SGPC82
- ◆ Material: Single skin steel with punched square holes
- ◆ Dimension: 82 mm pitch height, 0.8mm/1mm/1.2mm thickness
- ◆ Max Width*Height: 5000*5000mm
- ◆ Color: any RAL color
- ◆ Surface finishing: pre-painted, galvanized, powder coating

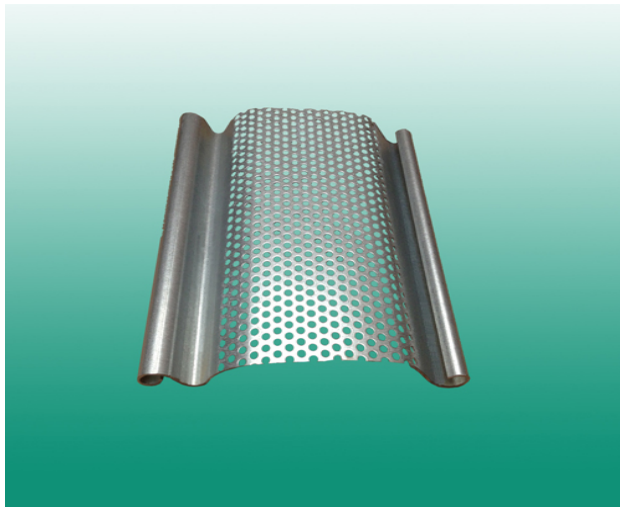


- ◆ Item number:SGI75
- ◆ Material: Double Single skin steel PU/Rock wool foamed
- ◆ Dimension: 75 mm pitch height, 0.8mm/1mm thickness
- ◆ Max Width*Height: 10000*8000mm
- ◆ Color: any RAL color
- ◆ Surface finishing: galvanized, powder coating

Slats options

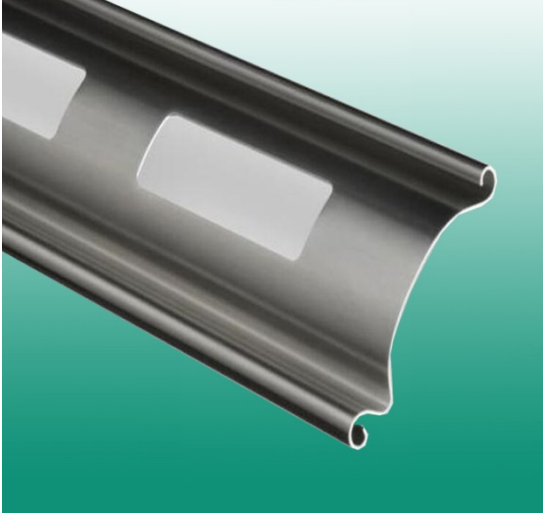


- ◆ Item number:SG110
- ◆ Material: Single skin steel
- ◆ Dimension: 105 mm pitch height, 0.8mm/1mm/1.2mm thickness
- ◆ Max Width*Height: 12000*9000mm
- ◆ Color: any RAL color
- ◆ Surface finishing: pre-painted, galvanized, powder coating



- ◆ Item number:SGP110
- ◆ Material: Single skin steel with small 3 mm diameter holes
- ◆ Dimension: 105 mm pitch height, 0.8mm/1mm/1.2mm thickness
- ◆ Max Width*Height: 10000*7000mm
- ◆ Color: any RAL color
- ◆ Surface finishing: pre-painted, galvanized, powder coating

Slats options



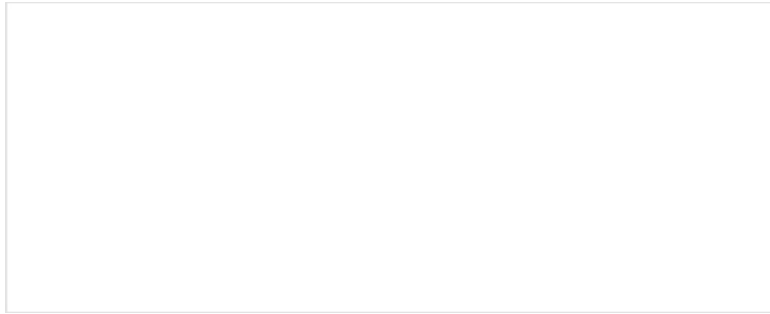
- ◆ Item number:SGPC110
- ◆ Material: Single skin steel with punched square holes
- ◆ Dimension: 105 mm pitch height, 0.8mm/1mm/1.2mm thickness
- ◆ Max Width*Height: 10000*7000mm
- ◆ Color: any RAL color
- ◆ Surface finishing: pre-painted, galvanized, powder coating

Technical Data Sheet: steel Roller Shutter Door

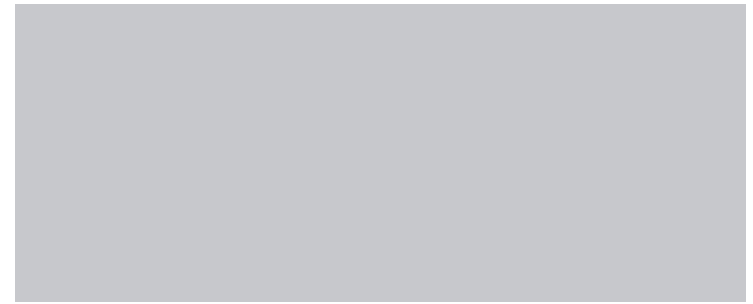
Surface finishing for Steel roller shutter doors

- 1, Galvanized or galvanizing, It is the process of applying a protective zinc coating to steel or iron, to prevent rusting.
- 2, Pre-painted: The coatings are applied on a continuous basis via highly efficient production lines which can involve cleaning, single or multiple coatings on one or both sides of the steel. The final product is then ready to be processed further and can be cut, bent, and generally worked without damaging the final coating.
- 3, Powder Coating: Powder coating involves applying a dry powder to the steel surface and then curing it in an oven to create a durable and decorative finish. It offers excellent corrosion resistance, weather resistance, and color variety.

Color Options



RAL 9003 White(standard)



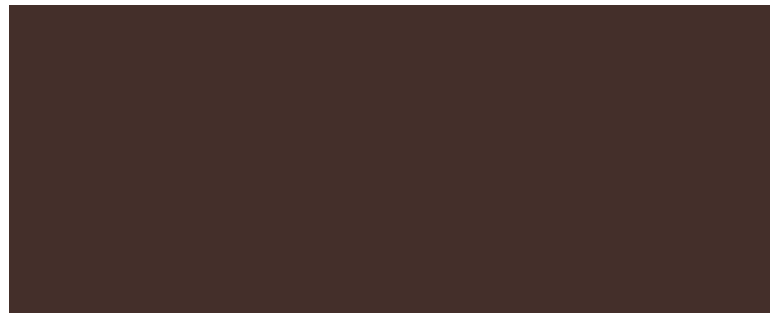
RAL 9006 White aluminum



RAL 7004 Signal grey



RAL 1014 Ivory



RAL 8017 Chocolate brown



Other customized RAL colors

Technical Data Sheet: Steel Roller Shutter Door

shaft / barrel / roller drum

- ◆ Material: steel
- ◆ Diameter: 5 inches (side motor), 6 inches, 8 inches, 10 inches
- ◆ Wall thickness: 1.5 mm, 2 mm, 2.5 mm, 3 mm, 4 mm

Technical Data Sheet: Steel Roller Shutter Door

Mullions

Removable center mullions are available on request for applications where shutter opening can not be covered by one shutter door.

Side plates / Brackets

- ◆ The brackets are manufactured from mild steel and supplied in premed finish
- ◆ The brackets can only be installed on a structural fixing surface such as concrete, steel columns, steel angles are normally used to support the brackets if needed
- ◆ With plates slotted to accommodate shaft or motor mounting.

Technical Data Sheet: Steel Roller Shutter Door

Side Motor

Motor type	Side motor
Manual hoist chain	The shutter door could be opened or closed manually by chain if power off
Motor Voltage / Frequency	single phase 220V/50Hz, three phase 380V/50Hz, 110V/60Hz is available if needed
Motor remote controls	2 or more
Motor lifting Force	300KG, 600KG, 800KG, 1000KG, 1500KG, 2000KG
Optional	photocell(safety sensor), alarm system, safety brake, wifi camera



Technical Data Sheet: Steel Roller Shutter Door

Manual operation system

We are able to supply manual operation Steel roller shutter doors to the area with power supply concerns. Manual operation is a reliable solution in situations where power availability may be limited or inconsistent.

Options

Option 1	Counter spring + spring box system
Option 2	Torsion spring system
Option 3	Manual hoist chain system
Option 4	Wire rope system

Technical Data Sheet: Steel Roller Shutter Door

Design and Customization:

- ◆ Wide range of colors and finishes to suit your aesthetic preferences
- ◆ Optional vision slats or perforated slats for visibility or ventilation
- ◆ Can be integrated into various architectural styles
- ◆ Customizable sizes to fit specific openings and requirements

Installation:

- ◆ Professional installation recommended for optimal performance
- ◆ Can be retrofitted to existing structures or installed during new construction
- ◆ Installation process requires specialized tools and expertise
- ◆ We will offer instruction manual by files or video

Technical Data Sheet: Steel Roller Shutter Door

Maintenance:

- ◆ Low maintenance requirements for ease of use
- ◆ Regular cleaning with a mild detergent and soft cloth
- ◆ Lubrication of moving parts as needed
- ◆ Periodic inspection of motor and safety features by a professional technician

Certifications and Compliance:

- ◆ ISO 9001 certificated, designed and manufactured in compliance with relevant industry standards and regulations
- ◆ CE marking and certification for quality and safety assurance